

GPP Control Box Removal



Switch the batteries to the off position.
Remove upper outboard control mounting screw.
Leave the lower mounting screw in place to not strain control cables.



Remove hex head screws on both sides of console.
(Note: lower screw on control removed for ease of photography).



Lay top half of console forward onto battery compartment.
Protect the console with a soft pad.

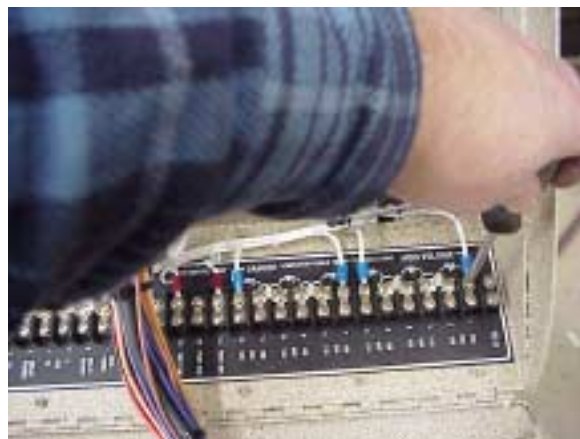
GPP Control Box Removal



Unplug the Audio Alarm connector.



Check the wire markers on terminal strip TS-0 locations: 1, 6, 7, 12, 13 & 15.
Re-tag the wire locations if necessary.



Remove the wires from the TS-0 terminal strip.

GPP Control Box Removal



Check the location tags and remove the wires from TS-1 terminal strip locations: 1, 2, 5, 8, 9 & 11.



Remove the 3 lower Philips head screws from each side of the control box and then while holding the control box remove the remaining upper screws and lift the control box out of the console.

Reassemble the console and remount the motor control before transporting the boat.